



CAPPUCCINO
TEA LATTE
AMERICANO



westomatic

British Vending Excellence Since 1966

Sigma Touch - The new interactive touch screen vending machine delivering High Street quality drinks and more

Sigma TOUCH

Vending for the next generation



Tomorrow's vending technology today

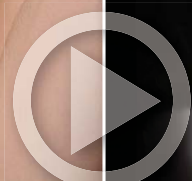
The Sigma Touch brings a whole new dimension to the provision of hot beverages thanks to the fully integrated, 19-inch high-definition interactive touch screen menu, amazing high resolution graphics and fully integrated speakers.

The touch screen intuitively guides you through a variety of user-friendly menus delivering coffee shop quality drinks whilst displaying high definition advertisements in between drink sales.

Whether you want to treat yourself to a hazelnut syrup shot from the 'build-your-own' drinks menu, promote your latest corporate message via USB and telemetry or generate revenue selling advertising space - the Sigma Touch will deliver the coffee shop experience and more...

Features

- Stylish, sleek looks with strong accent lighting in the drink dispense station
- Intuitive touch sensitive menu selection
- High-definition 19-inch touch screen with fully integrated speakers for high quality sound
- Opportunity to display your own corporate messages
- Dynamic "attention-grabbing" advertising when machine is not in use - helps drive sales!
- In-built WIFI GPRS telemetry - puts you in total control
- Accessibility menu specially designed for wheelchair access below the 1.2 metre guideline
- Menus supplied in four languages as standard
- FREE audit software for downloading drink sales information from USB
- Energy management software reduces power use when inactive
- Single fresh brew, double fresh brew and wholebean / fresh brew models available



Features

Item	Description	As Standard
Audit capability	USB	Standard
	Wireless telemetry	Standard
Automatic cup dispenser	150 ml, 180 ml or 250 ml cup dispenser	Standard
Cup sensor	Cup sensor & stand (for use of own cup or jug)	Standard
	Red LED cup display lighting	Standard
Display	19-inch touch sensitive screen	Standard
Menu selection	Wheelchair access menu - buttons available below 1.2 metres	Standard
	Sigma Touch branded menu system	Standard
	Videos with integrated countdown during drink vend duration	Standard
Languages	English, French, Spanish and German	Standard
Water filter	Specify 3M or Brita kit & filter (to reduce scale build-up)	Optional
Jug	Matching thermal stainless steel jug	Optional
Lid holder	Stainless steel lid holder (external fitting)	Optional
Lock	3 position lock & 2 keys	Standard
Payment system	Coin and / or cashless payment system	Optional
	Lockable cashbox	Optional
Graphics	Sigma Touch acrylic door panel	Standard
	Bespoke acrylic door panel	Optional
	Bespoke side panels	Optional

Example of video and integrated drink countdown

Dimensions	
Height	1830 mm
Width	710 mm
Depth	765 mm
Weight	165 kg approx (Hot Only)
Capacities (based on 250 ml cups)	
Cup capacity	470 cups max
Electrical Services & Ratings - Power	
Voltage	230 Volts AC + / - 10%
Current	13 amps
Frequency	50 Hz
Energy Consumption	
Idle Phase	120 watt hrs / hr
Vending Phase	510 watt hrs
Per Litre	85 watts / hr / litre
Water Requirements	
Pressure	138 kpa (1.37 Bar) min - 828 kpa (8.27 Bar) max
Supply	15 mm BSP from rising main



Advertising Opportunities

As well as delivering high quality drinks, the Sigma Touch also offers revenue opportunities with its advertising and messaging capabilities.

The technology within the 19-inch touch screen allows a rolling series of high-definition advertisements which are screened in between drink sales, promoting products from nearby snack machines, advertising nearby facilities or services and displaying in-house corporate messages.

The machine becomes a focal point for all your advertisements and messages whilst attracting increased vending sales for you.



Advert example

Make it your own with the customisable features

You can also customise your on-screen menus with your company identity or branding.

Simply add your adverts and logos to your USB stick and let the Sigma Touch become an essential marketing asset in promoting your business, products or services whilst at the same time serving delicious coffee shop quality drinks.



Languages and accessibility

The Sigma Touch caters for a wide range of sites, users and user requirements and is particularly suited to high footfall public locations.

The choice of menus are available in three languages as well as English. French, German and Spanish drink titles and descriptions will lead consumers seamlessly through the drinks selection with no fuss, assistance or additional signage. Other languages can be added.

The Sigma Touch also offers an innovative menu for wheelchair users, offering the choice of a menu in the lower section of the screen with all touch selection buttons lower than 1.2 metres in height.



German menu



Accessibility menu





CAPPUCCINO
TEA LATTE
AMERICANO



Drink Options	Machine Type		
	Single Fresh Brew Tea	Double Fresh Brew	Wholebean and Fresh Brew Tea
Americano	✓	✓	✓
Babycino	✓	✓	✓
Flat White	✓	✓	✓
Cappuccino	✓	✓	✓
Latte/Skinny Latte	✓	✓	✓
Creamichoc	✓	✓	✓
Double Espresso	✓	✓	✓
Espresso	✓	✓	✓
Fresh brew Tea	✓	✓	✓
Hot Chocolate	✓	✓	✓
Hot Water	✓	✓	✓
Instant Coffee (1)	✓	✓ (or soup)	✓
Instant Coffee (2)	✓ (or soup)	X	X
Instant Tea	X	X	X
Instant Soup	✓ (or Inst 2)	✓ (or Inst 1)	X
Macchiato	✓	✓	✓
Mocha	✓	✓	✓

✓ Standard hot drink

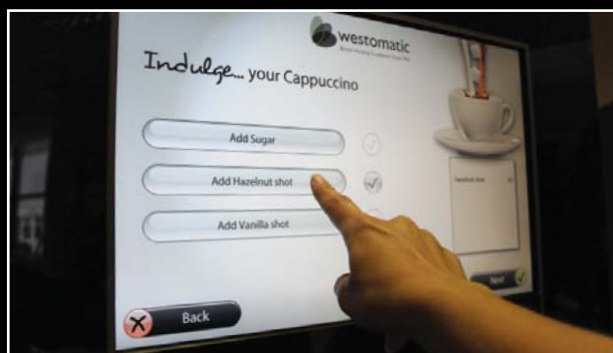
X Not available

*The menu has a customisable feature allowing drink choices to be added, removed and repositioned on-screen via the easy-to-use operating system.

Touch screen example - *Wholebean / Fresh Brew



Design your own...



Design your own drink with the indulgent additional options menu.

- Treat yourself with a hazelnut shot in your latte or a hint of vanilla in your flat white
- Add an extra sugar for those with a sweet tooth
- Use your own cup or mug - the cup sensor recognises when your cup is present



NEW...Skinny Latte

£1.00

Skinny Latte

A lighter milky coffee drink

Offer customers more choice with the NEW Skinny Latte - the lighter milky coffee drink. Simply add the new drinks choice to your standard menu when using skimmed milk products.

Tel: +44 (0)1626 323100 Fax: +44 (0)1626 369400
 vending@westomatic.com www.westomatic.com



westomatic

British Vending Excellence Since 1966

E&OE Westomatic Vending Services Limited reserve the right to alter specifications and availability without notice.

Westomatic Vending Services Ltd, Units 7- 8 Forde Court, Forde Road, Newton Abbot, Devon, United Kingdom TQ12 4BT